

# CONVEYOR BELT TRAILER

electric driven

## Type **GRA 2.7–3.5**



- Ideal for firewood
- 2-chamber system
- Revolving pendulum flap

### Practical and flexible

- Portioned loading and unloading by an electrically operated roller conveyor
- Revolving pendulum flap to supply 2 customers
- Optimized overall height (1.965 mm) for delivery in carports and garages

### Efficient

- Max. volume 8.5 m<sup>3</sup>, payload 2.6 t

### Comfortable and safe

- No manual loading and unloading necessary
- Cargo always in the optimum center of gravity – resulting in high driving safety

### Durable

- High-quality processing through laser and edge parts
- Fully hot-dip galvanized

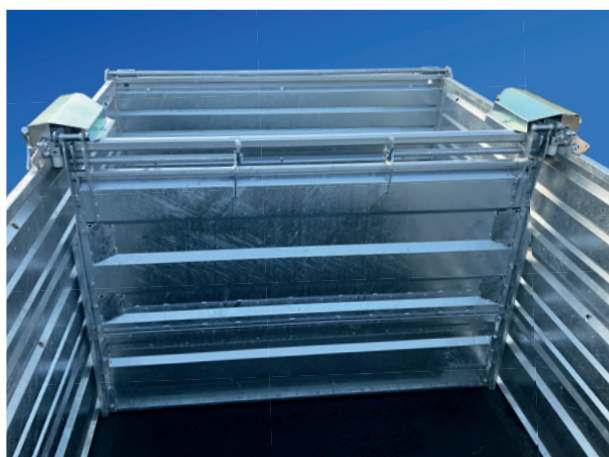
# CONVEYOR BELT TRAILER

electric driven

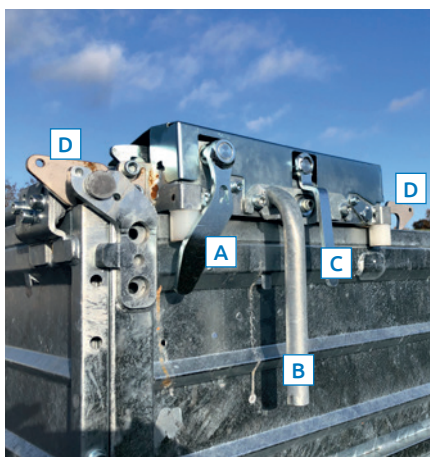
## Type **GRA 2.7-3.5**



Electrically operated conveyor belt with gear transmission



Revolving pendulum flap



- A unlocking the pendulum function
- B push handle
- C brake with unlocking function
- D Transport lock for the revolving pendulum flap (front/rear)

Locking of the revolving pendulum flap

